



MOTORIZED GEAR PUMPS SERIES 1222000

For Oil and Light Grease

1222000

PRODUCT DATA SHEET

ENGLISH

DESCRIPTION:

These pumps have been designed to offer a solid and functional lubrication unit, which will feed and control the correct operation of double line oil systems.

The unit consists of:

- gear pump, output 250 cc/min., driver by a 3-phase electric motor
- 6 litre capacity sheet steel reservoir
- hydraulic inverter
- gauge, signalling the pressure in the line connected to the pump.

The gauge will also signal (with a temporary zero setting), the moment at which the lines' inversion takes place.

The hydraulic inverter will automatically feed the two lubricating lines alternatively.

A further warranty of the system's safety is given by a Reed contact in the reservoir's electric minimum level switch.

A pressure switch (for pump model 1222070 only) will check the safe operation of the system by signalling to an electric panel (available on request) that the line pressure has reached the set value.

SPECIFICATION:

Delivery:	250 cm ³ /min.
Pressure:	100 bar max.
Lubricant:	15 to 1000 Cst. At normal fluid temperature.
Motor:	Three phase 220/380 V – 50 Hz.
Protection:	IP 55
Reservoir:	6 litre steel with low level indicator.
Lubricant outlet:	G 3/8 UNI-ISO 228/1
Pressure regulating valve:	set to 90 bar.
Inlet filter:	250 micron.



Minimum level contact:

Max. potential 60 VA.

Max. voltage:

220 V ac. To 150 V dc.

Max. current:

1 A.

Pressure gauge:

scale 0 to 120 bar.
To signal pressure in the line.

Line inverter:

An over pressure hydraulic inverter will automatically invert the lines when the pressure value set on its valves is reached; it is adjustable from 30 up to 150 bar, pressure adjusted at 80 bar.

End of line pressure switch:
(for pump model 1222070 only)

ORDERING INFORMATION:

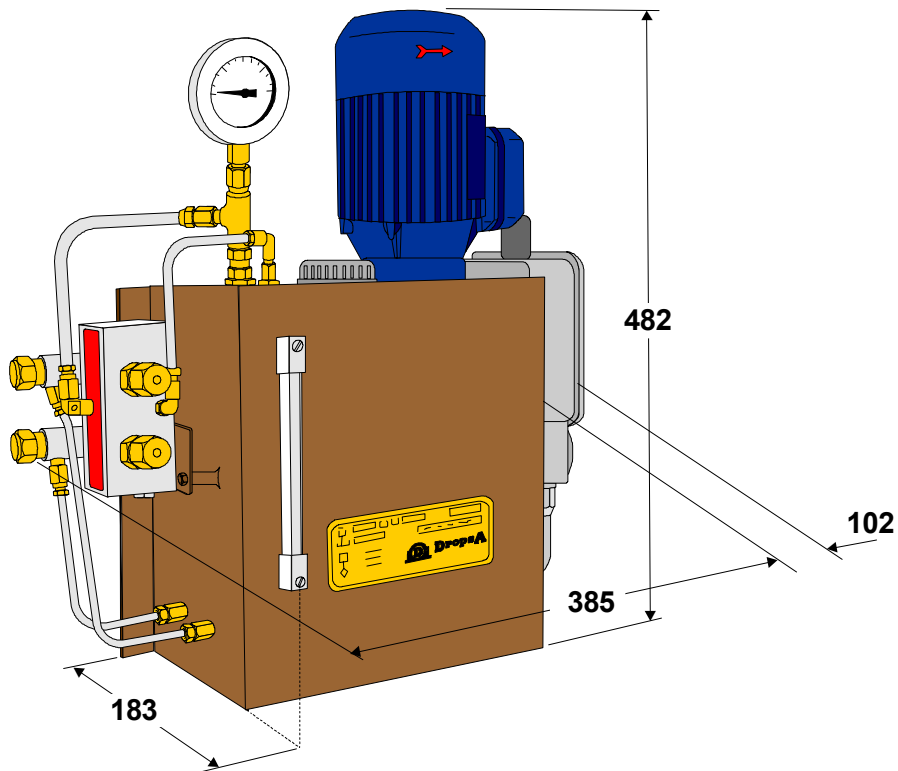
Ordering is by description and Part No.

Motorized pump without pressure switch for cycle control. **Part No. 1222060**

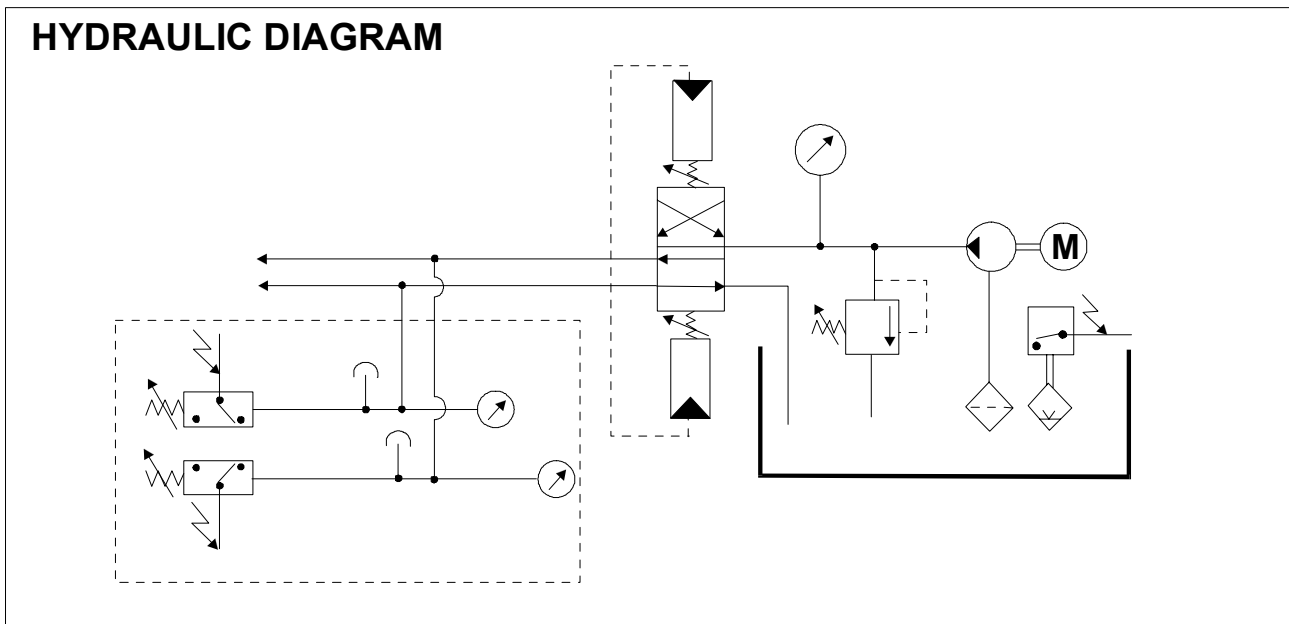
Motorized pump with pressure switch for cycle control. **Part No. 1222070.**

INSTALLATION/OPERATION:

Dimensions.



Hydraulic diagram.



ITALY
Dropsa SpA
t.(+39) 02-250791
f.(+39) 02-25079767

U.S.A.
Dropsa Corporation
t.(+1) 586-566-1540
f.(+1) 586-566-1541

BRAZIL
Dropsa
t.(+55) 011-563-10007
f.(+55) 011-563-19408

AUSTRALIA
Dropsa Australia Ltd.
t.(+61) 02-9938-6644
f.(+61) 02-9938-6611

SPAIN
Polydrop, S.A.
t.(+34) 93-260-22-50
f.(+34) 93-260-22-51

U.K.
Dropsa (UK) Ltd
t.(+44) 01784-431177
f.(+44) 01784-438598

GERMANY
Dropsa GmbH
t.(+49) 0211-394-011
f.(+49) 0211-394-013

FRANCE
Dropsa Ame
t.(+33) 01-3993-0033
f.(+33) 01-3986-2636

© Copyright Dropsa - all rights reserved. Reproduction of any part of this document is strictly forbidden without prior consent from Dropsa. Dropsa reserves the right to modify specifications without prior notice.